

Freightliner Business Class M2

Cab and Chassis Vocational Reference Guide

Section

6

Air System

Final Version

Freightliner Business Class M2

Cab and Chassis Vocational Reference Guide

Air System

Air Tank Location Guide

There are many factors that determine the size, quantity, and location of air tanks on any given vehicle.

Some of the factors that determine the air tank size include:

- Brake size
- Number of Axles
- Type of brakes (drum vs. disc)

This information, along with government safety regulations, help determine the volume of air required.

The quantity and location of the air tanks is determined by the following:

- Fuel tank, type, size, and location
- Exhaust type and location
- Wheel-base
- Engine/Transmission (including PTO's)
- Other frame-mounted components (battery box, back-of-cab access steps, air dryer, etc.)
- Clear frame requests (module 607)
- Location specific sales codes for air tanks (module 460)

These last two points are often the customers most direct influence on the location of air tanks.

If you would like to keep air tanks out of a certain area then use a 607 code.

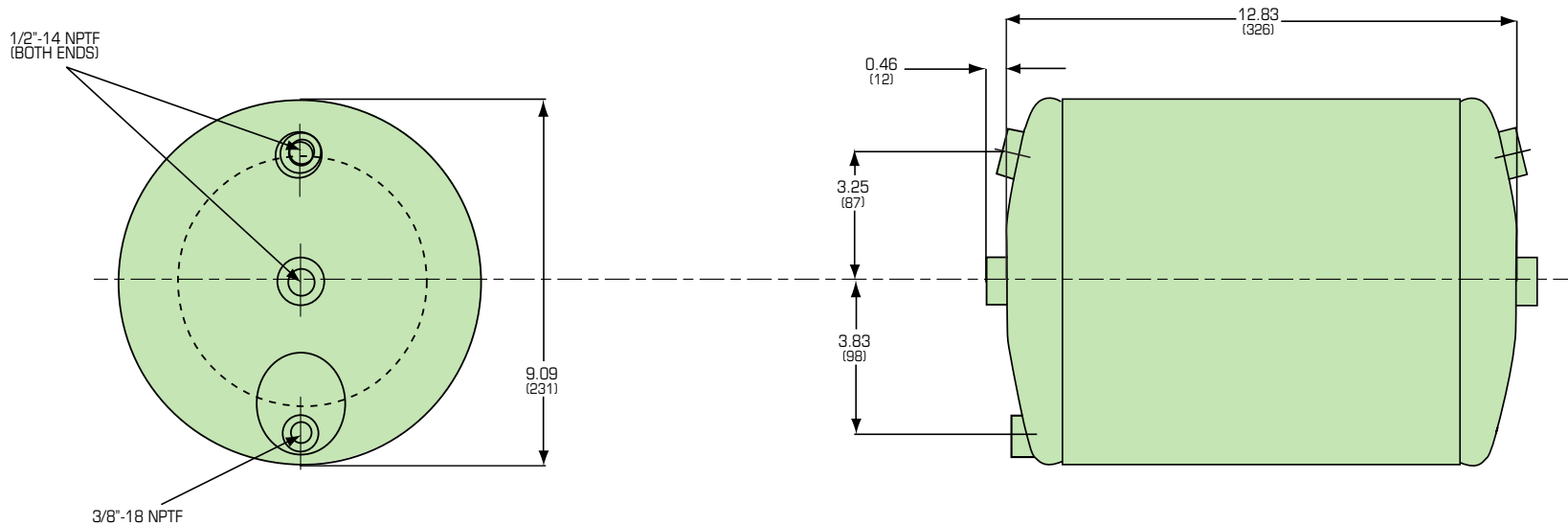
If you would like to specify where air tanks should go then use a location specific 460 sales code.

Freightliner Business Class M2

Cab and Chassis Vocational Reference Guide

Air System

725 Air Tank, Steel, 9"



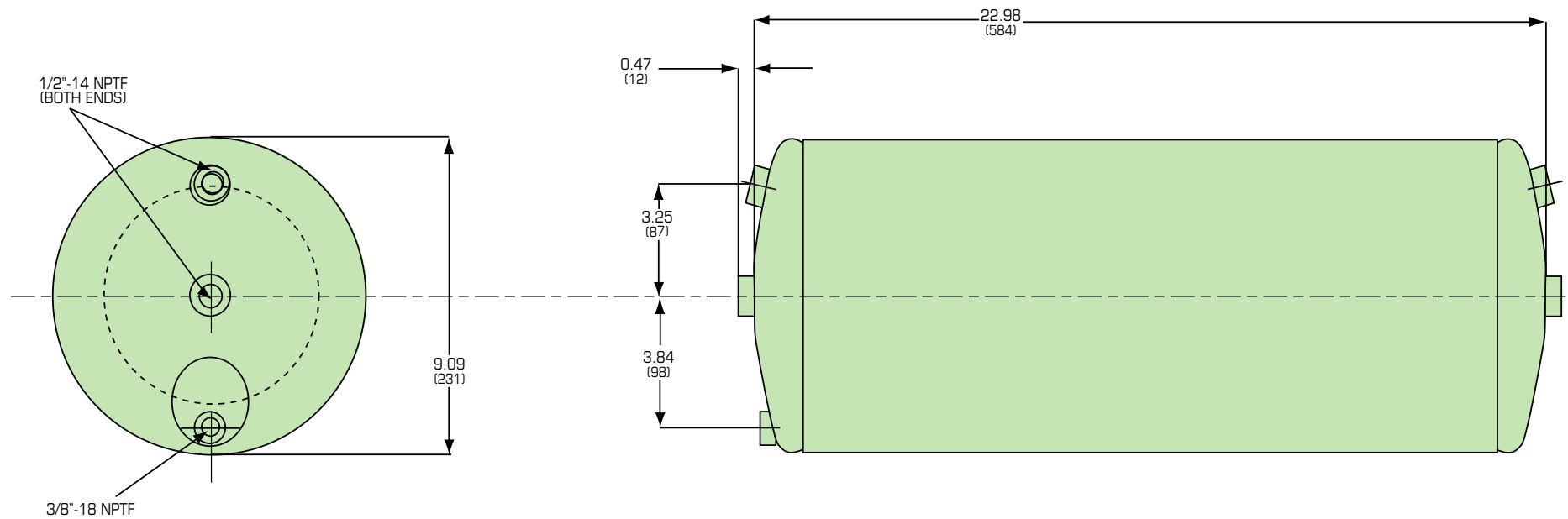
Note: Dimensions in parentheses are millimeters

Freightliner Business Class M2

Cab and Chassis Vocational Reference Guide

Air System

1350 Air Tank, Steel, 9"



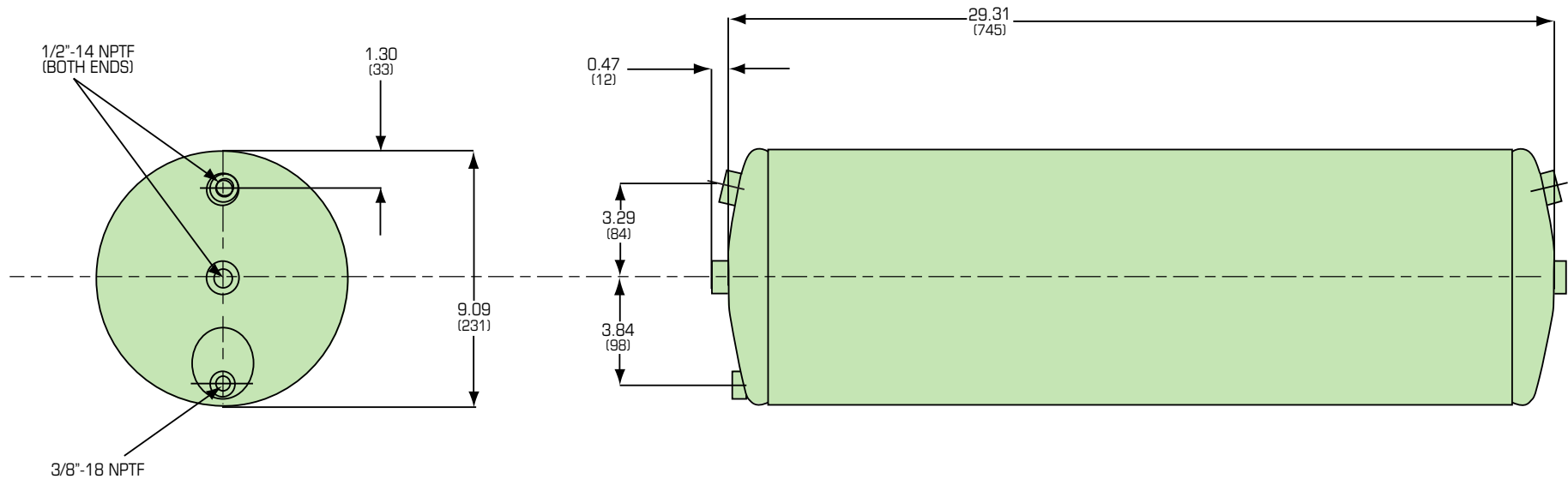
Note: Dimensions in parentheses are millimeters

Freightliner Business Class M2

Cab and Chassis Vocational Reference Guide

Air System

1740 Air Tank, Steel, 9"



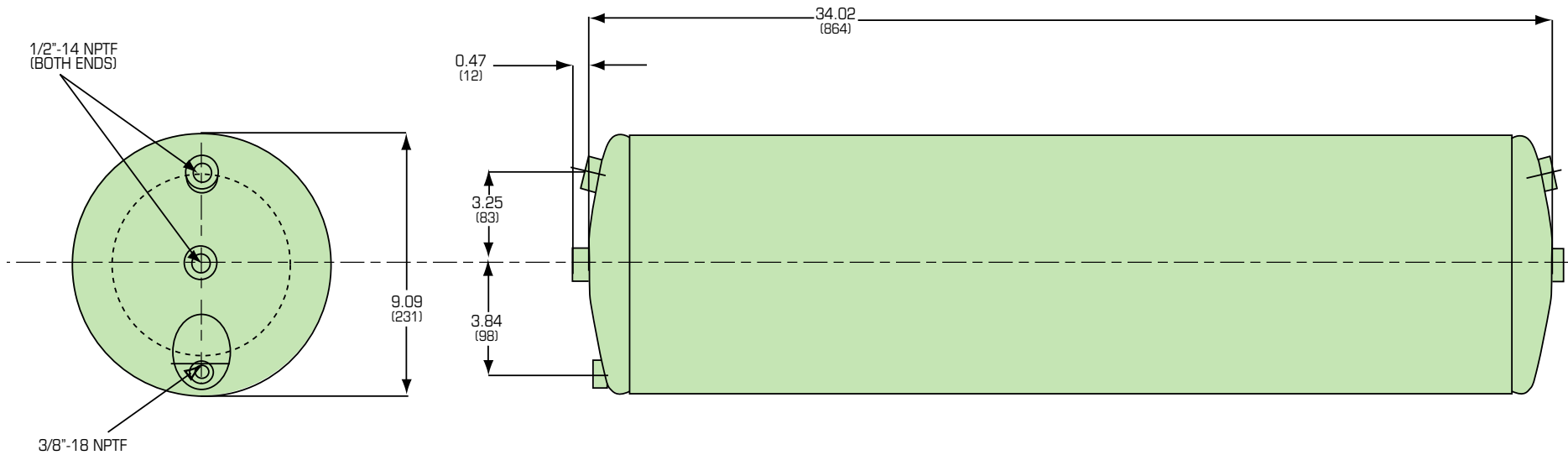
Note: Dimensions in parentheses are millimeters

Freightliner Business Class M2

Cab and Chassis Vocational Reference Guide

Air System

2030 Air Tank, Steel, 9"



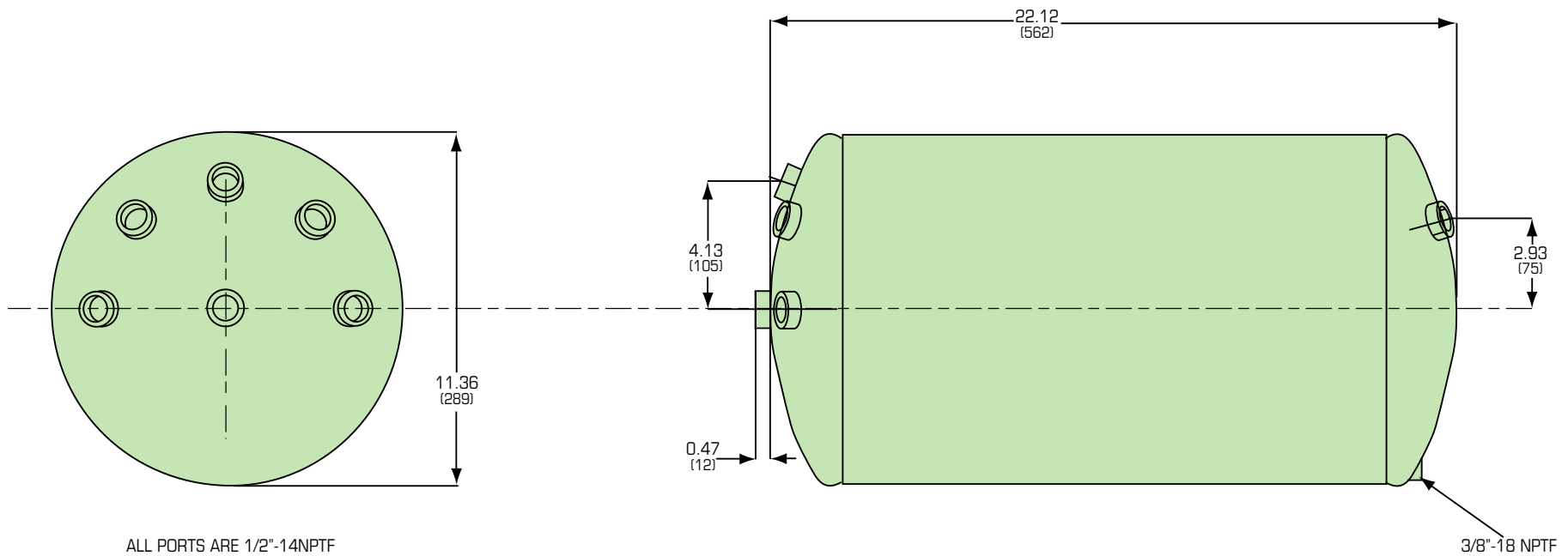
Note: Dimensions in parentheses are millimeters

Freightliner Business Class M2

Cab and Chassis Vocational Reference Guide

Air System

1990 Air Tank, Steel, 11"

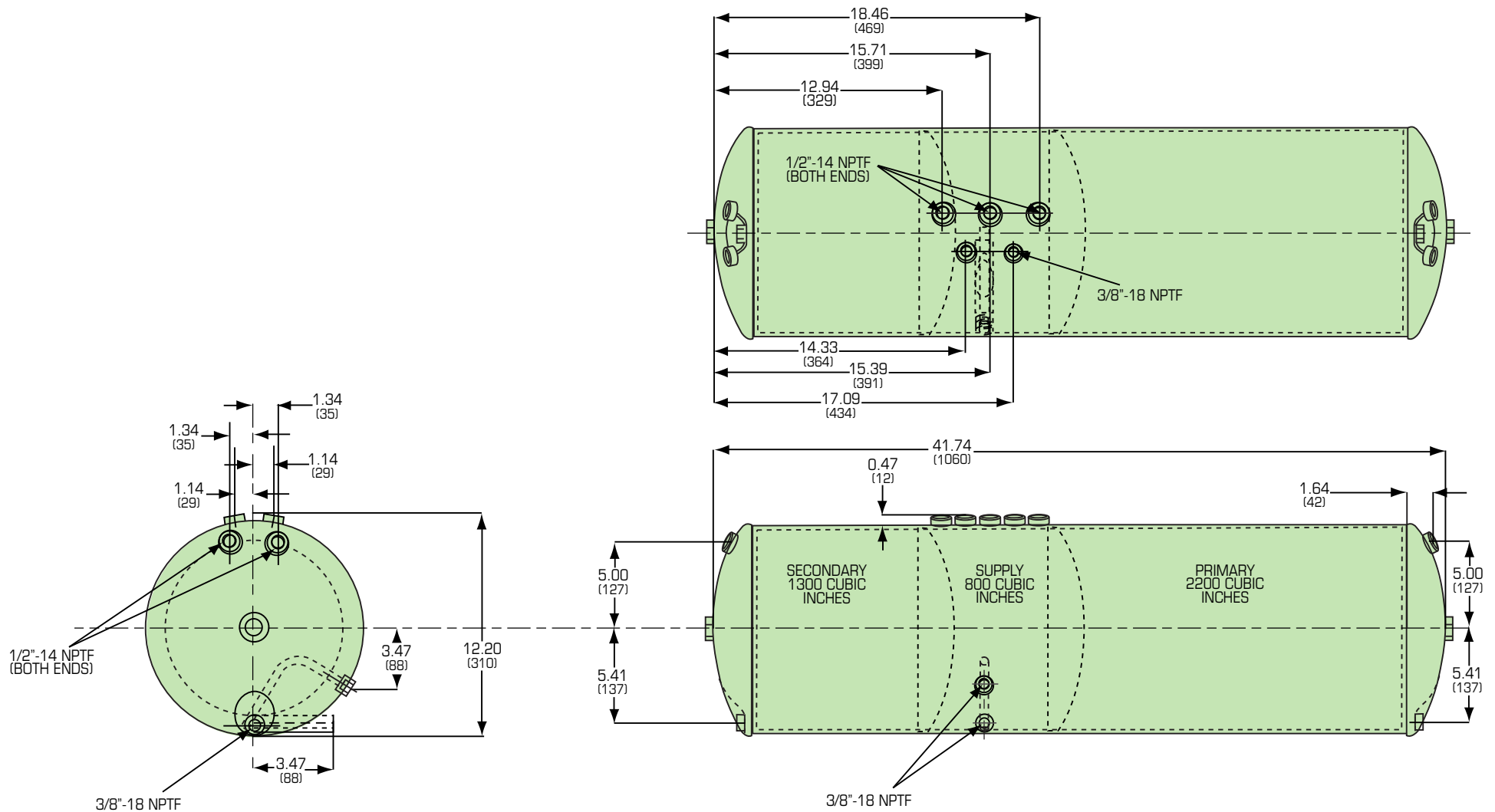


Freightliner Business Class M2

Cab and Chassis Vocational Reference Guide

Air System

4300 Air Tank, Triple, Steel, 12"



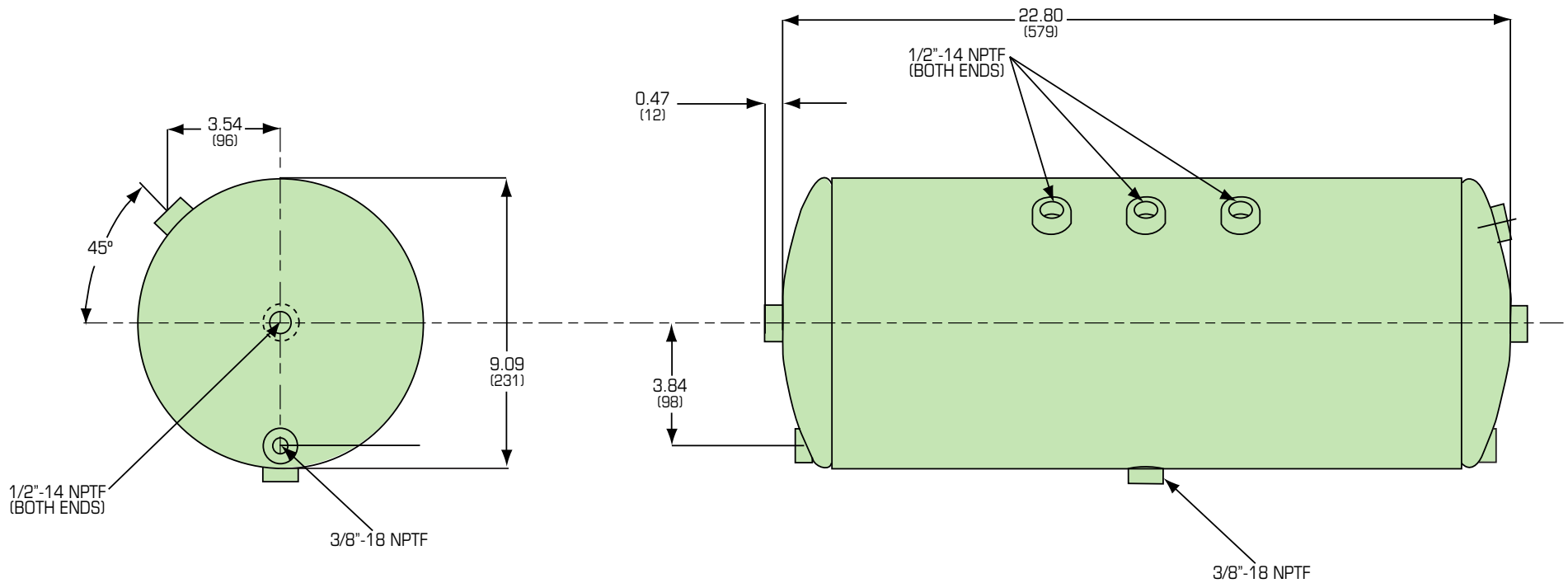
Note: Dimensions in parentheses are millimeters

Freightliner Business Class M2

Cab and Chassis Vocational Reference Guide

Air System

1350 Air Tank, Tag Pusher, 9"



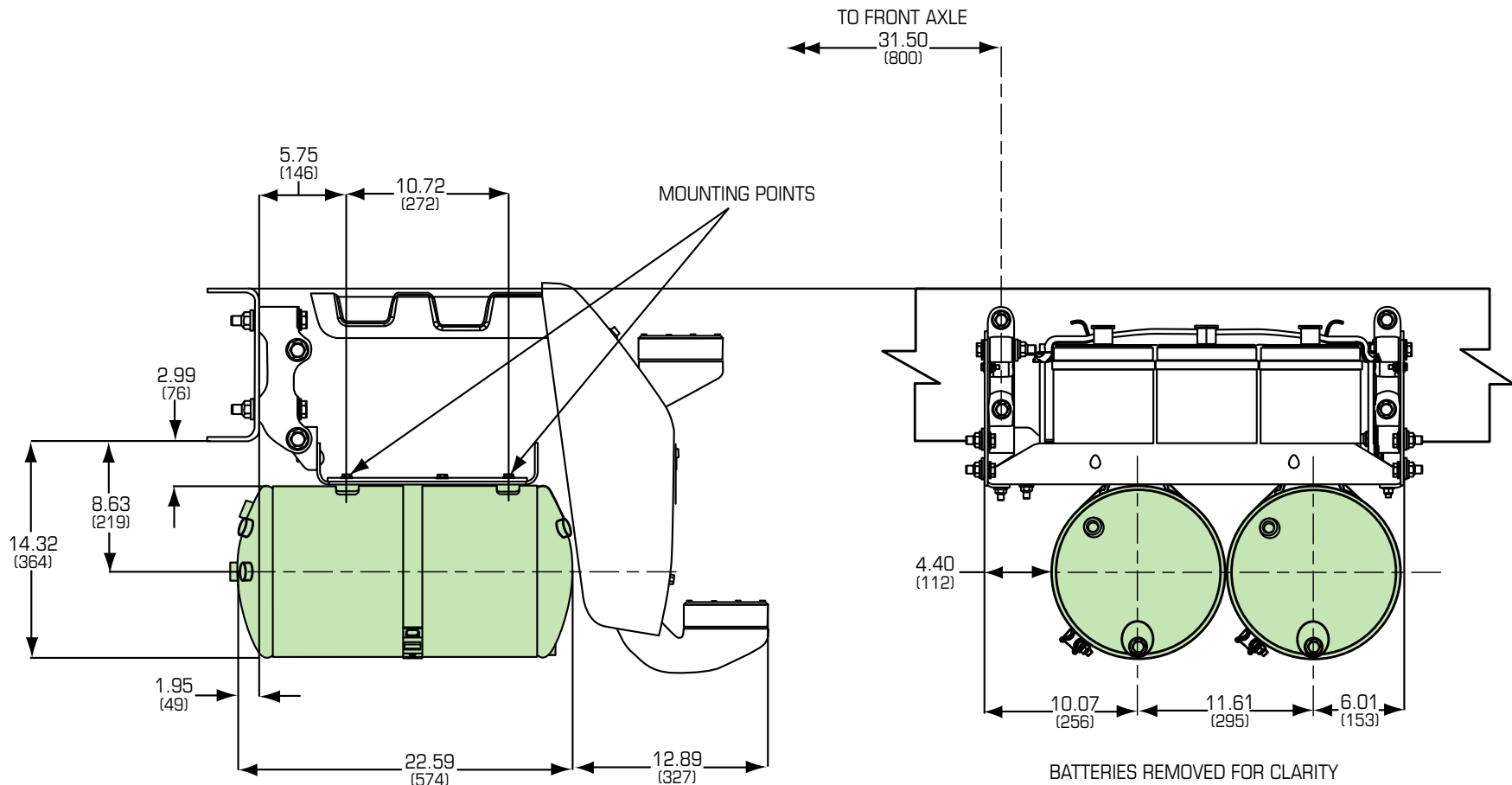
Note: Dimensions in parentheses are millimeters

Freightliner Business Class M2

Cab and Chassis Vocational Reference Guide

Air System

1990 Air Tanks Under Battery Boxes



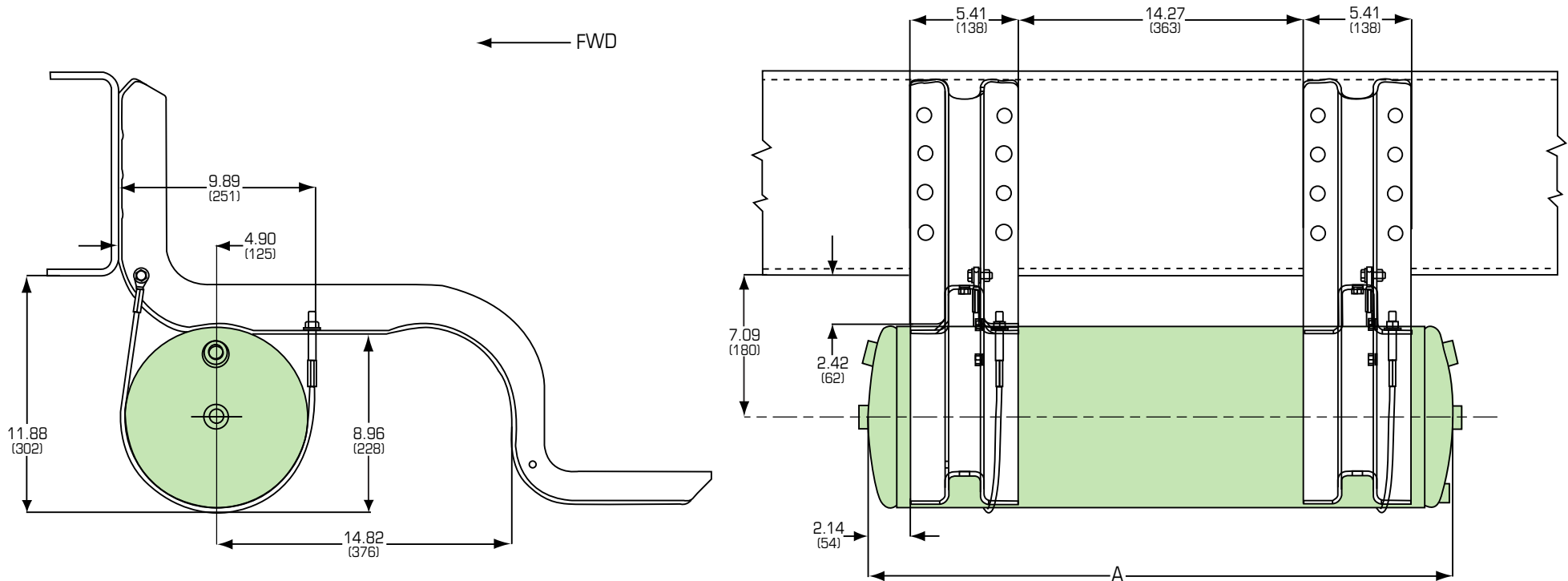
Note: Dimensions in parentheses are millimeters

Freightliner Business Class M2

Cab and Chassis Vocational Reference Guide

Air System

1740, 2030 Air Tank, 9", Step Mounted



1740 TANK SHOWN

9 INCH AIR TANK MOUNTED		
TANK	A	B
1740	29.31 (745)	2.14 (54)
2030*	34.02 (864)	2.14 (54)

* 2030 Air Tank can be slid forward if requested via 607 data code for clear rail BOC.

Note: Dimensions in parentheses are millimeters

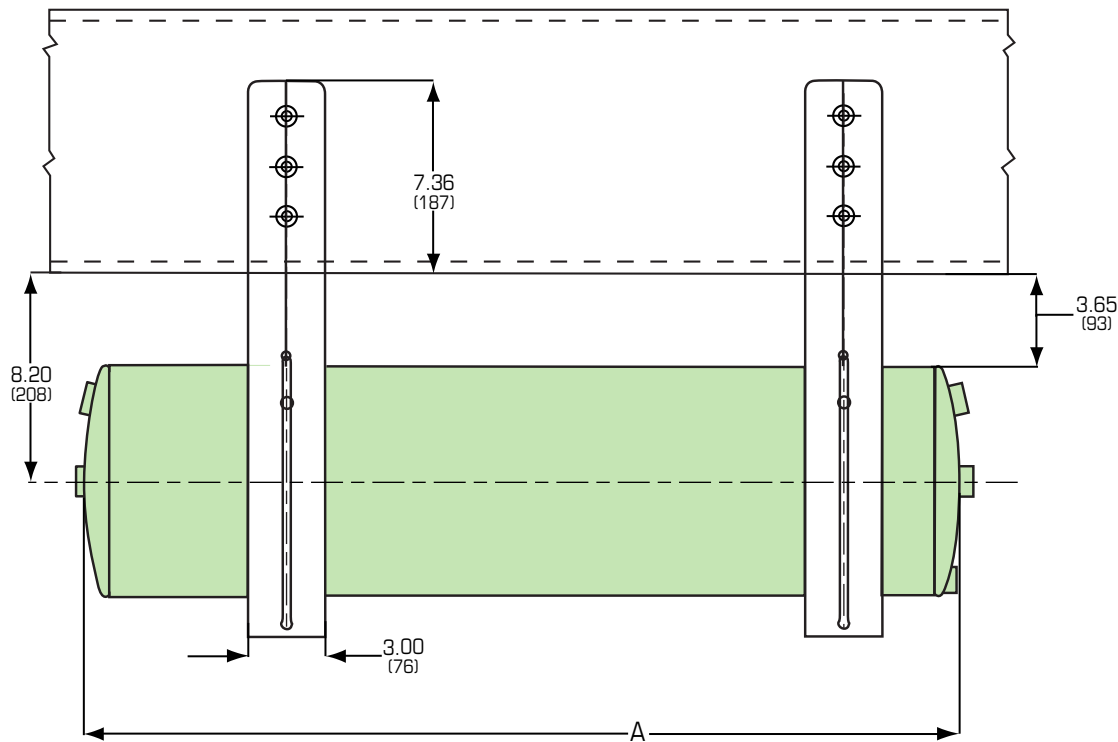
Freightliner Business Class M2

Cab and Chassis Vocational Reference Guide

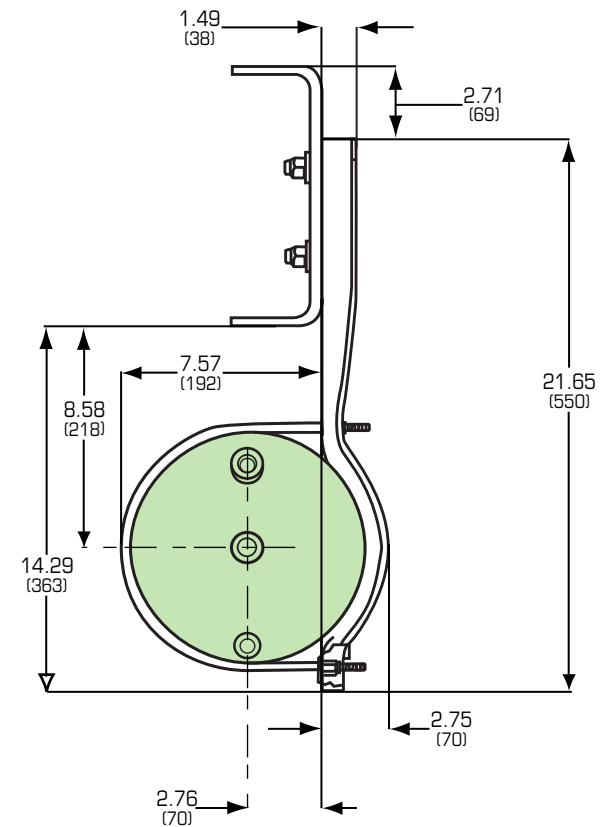
Air System

1740, 2030 Air Tank, Below Rail BOC with FLX-Style Bracket
2030 Shown

← FWD



9 INCH AIR TANK MOUNTED	
TANK	A
1740	29.31 (745)
2030*	34.02 (864)



2030 TANK SHOWN

Note: Dimensions in parentheses are millimeters

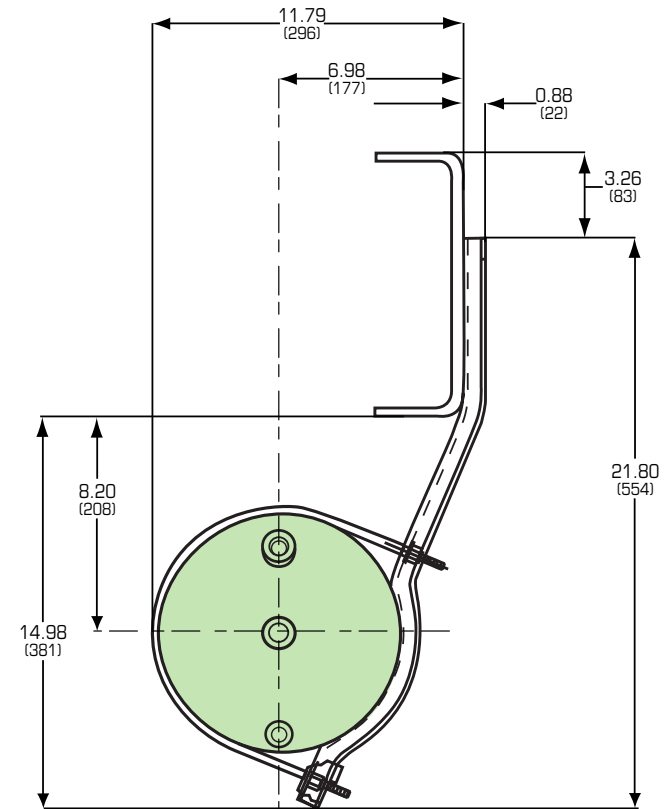
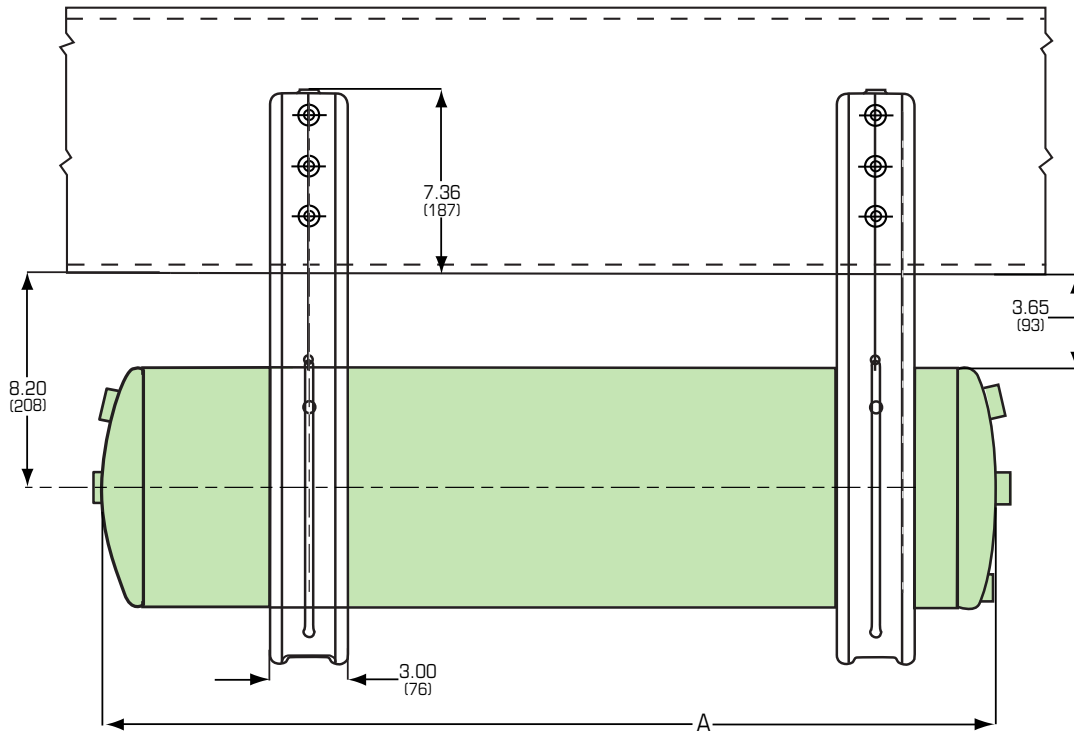
*2030 Air Tank can be slid forward if requested via 607 data code for clear rail BOC.

Freightliner Business Class M2

Cab and Chassis Vocational Reference Guide

Air System

1740, 2030 Air Tank, Below Rail BOC with USF-Style Bracket 2030 Shown



9 INCH AIR TANK MOUNTED	
TANK	A
1740	29.31 (745)
2030*	34.02 (864)

2030 TANK SHOWN

Note: Dimensions in parentheses are millimeters

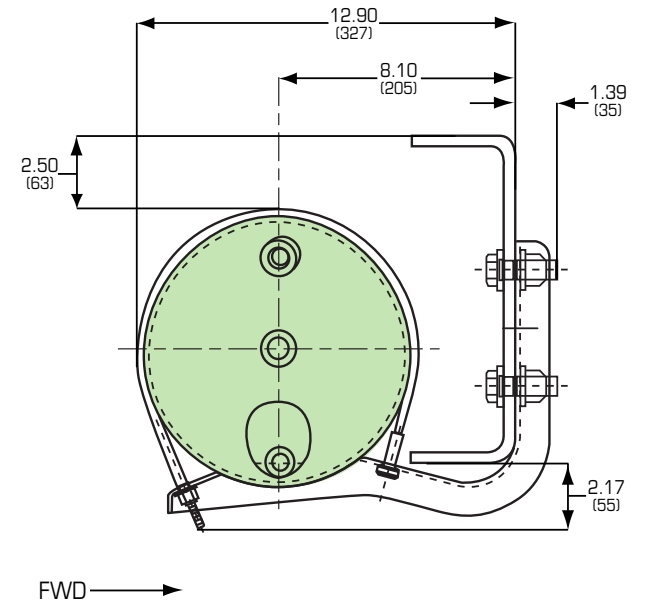
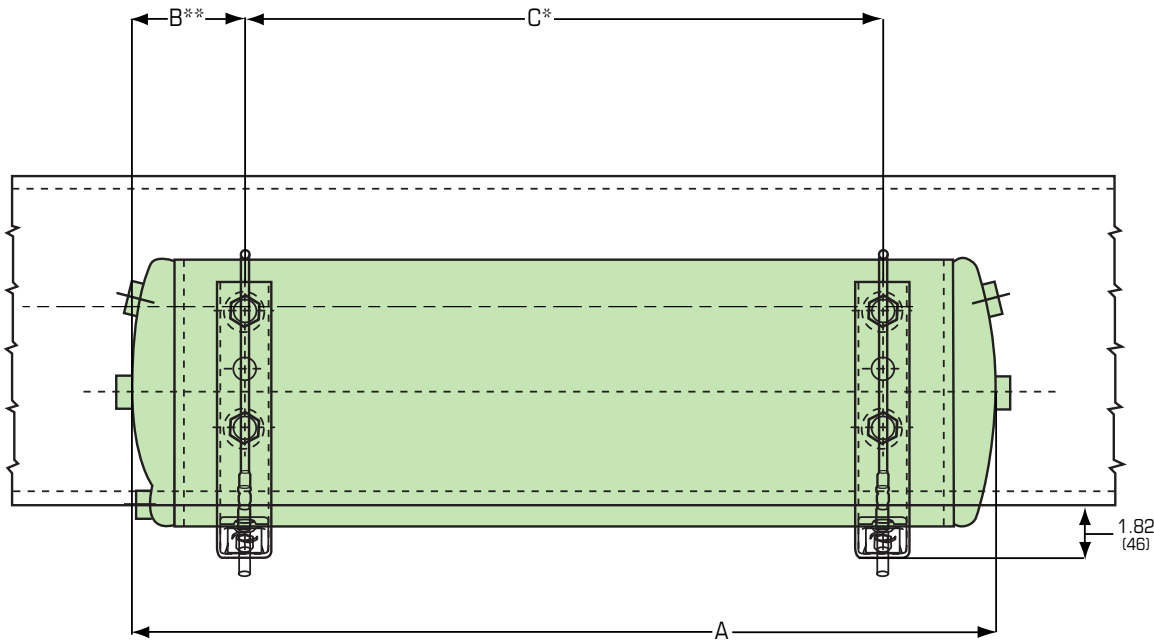
*2030 Air Tank can be slid forward if requested via 607 data code for clear rail BOC.

Freightliner Business Class M2

Cab and Chassis Vocational Reference Guide

Air System

1350, 1740 Air Tank, Mounted Inside Rail



9 INCH AIR TANK MOUNTING INSIDE RAIL			
TANK	A	B**	C*
1350	22.89 (584)	3.63 (92)	15.76 (400)
1740	29.31 (745)	3.83 (97)	21.65 (550)

* Tank is Centered Between Brackets When Space is Available

** Bracket to Tank Fore/Aft Relationship may vary.

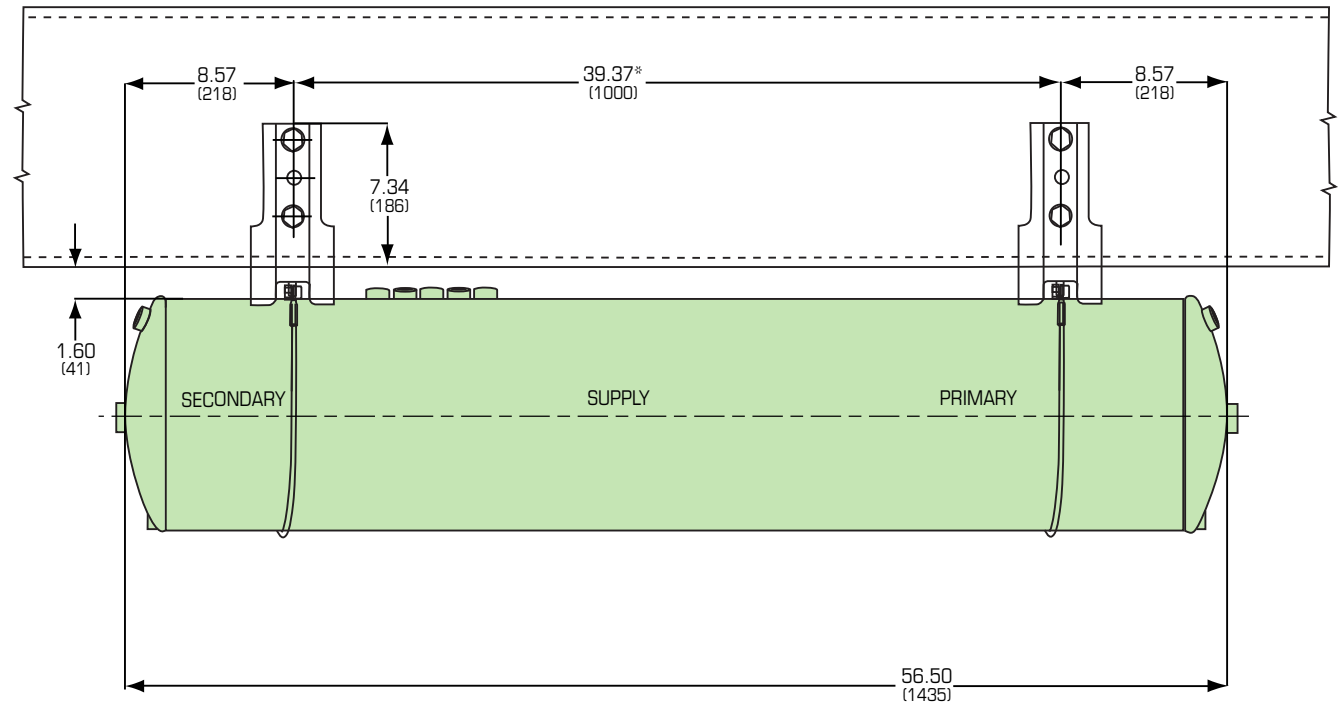
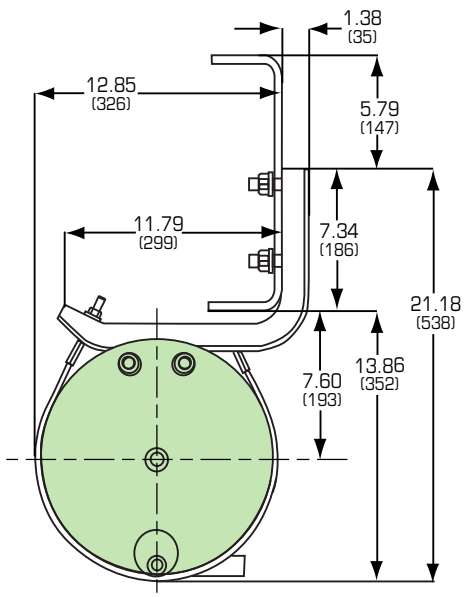
Note: Dimensions in parentheses are millimeters

Freightliner Business Class M2

Cab and Chassis Vocational Reference Guide

Air System

5900 Air Tank Triple, 12", Below Rail



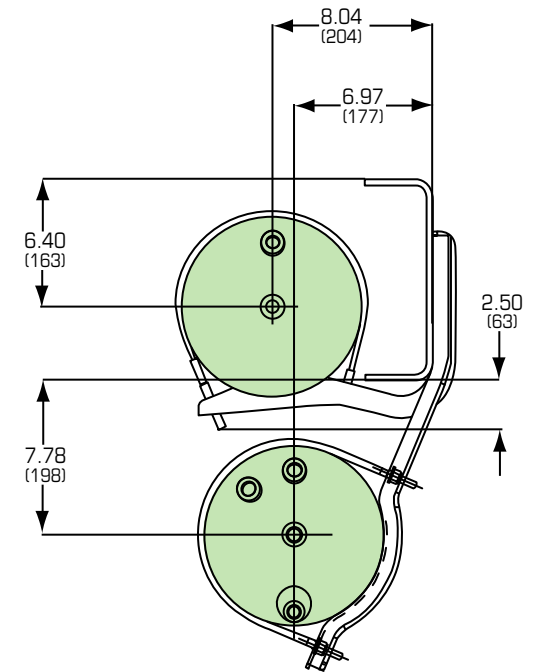
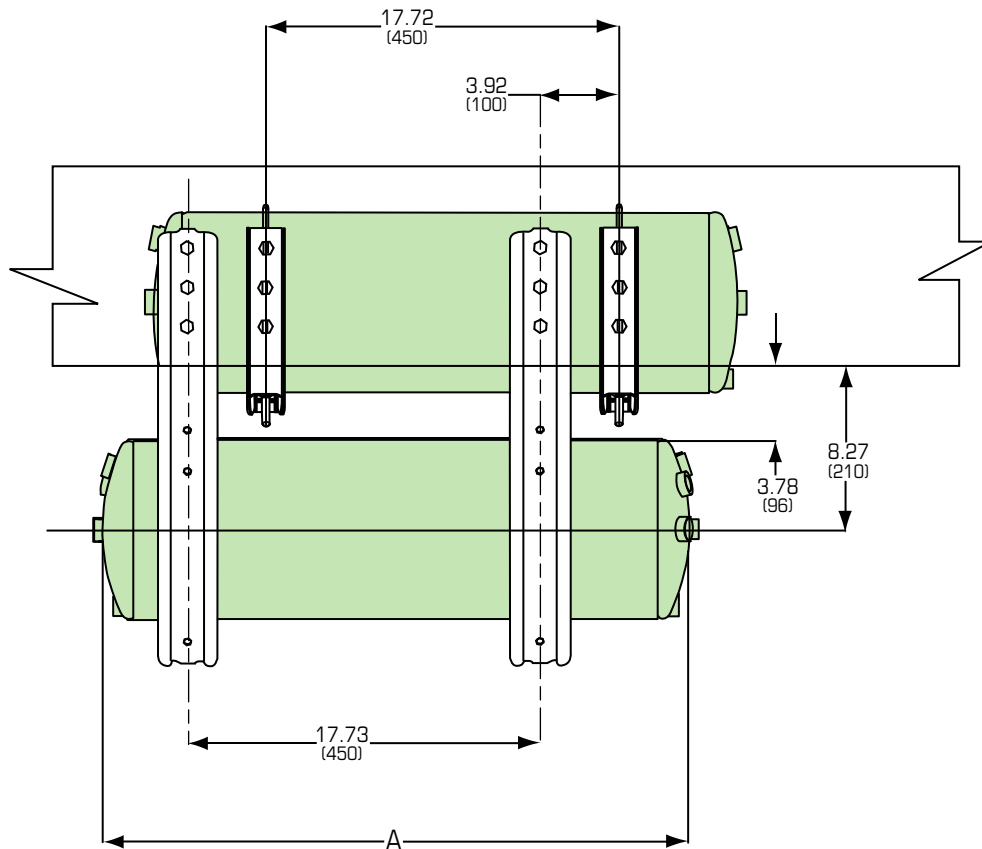
*Reference only can vary from 900 to 1100 mm.
Note: Dimensions in parentheses are millimeters

Freightliner Business Class M2

Cab and Chassis Vocational Reference Guide

Air System

1740, 2030 Air Tank Mounting



9 INCH AIR TANK MOUNTED	
TANK	A
1740	29.31 (745)
2030*	34.02 (864)

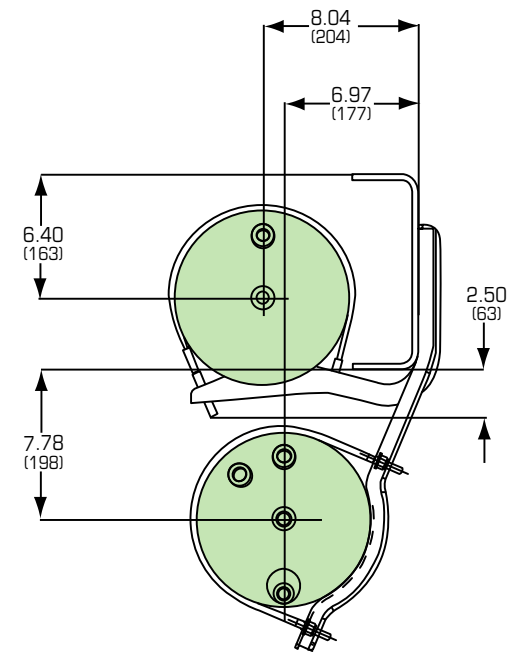
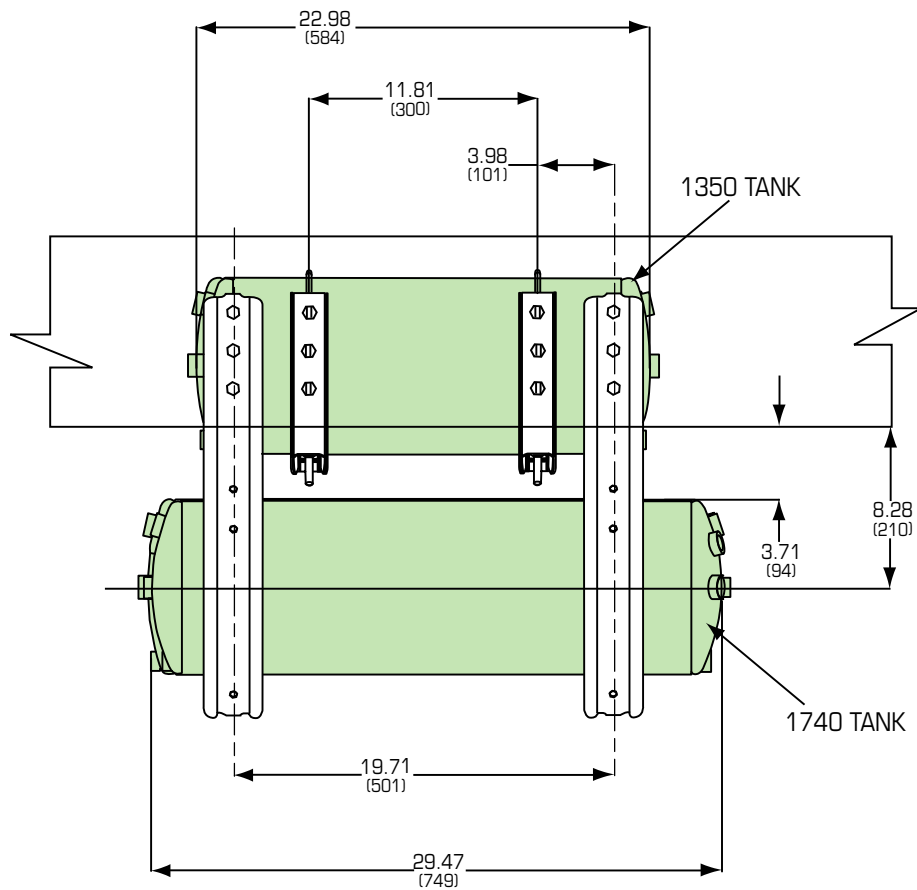
Note: Dimensions in parentheses are millimeters

Freightliner Business Class M2

Cab and Chassis Vocational Reference Guide

Air System

1350, 1740 Air Tank Mounting



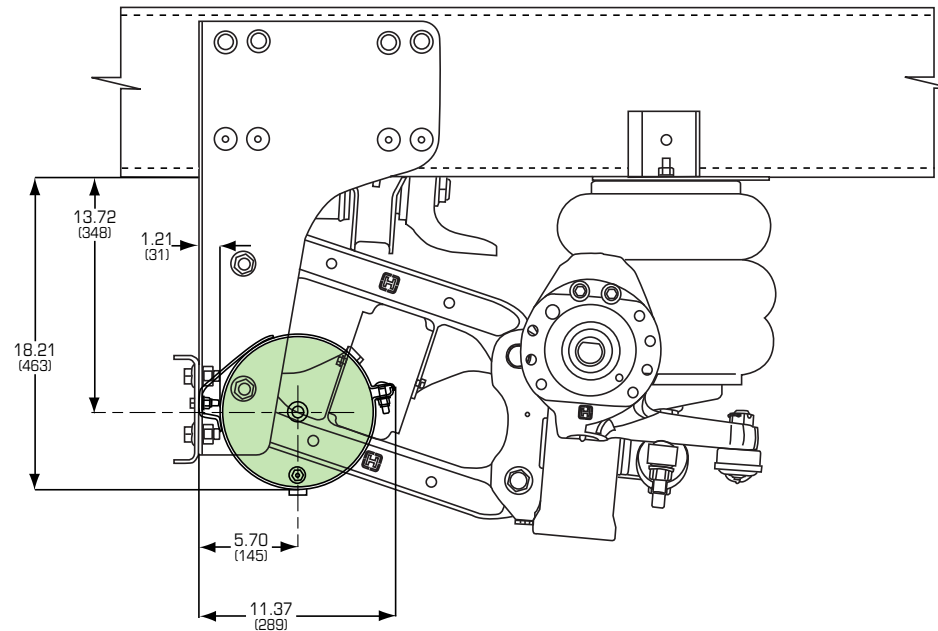
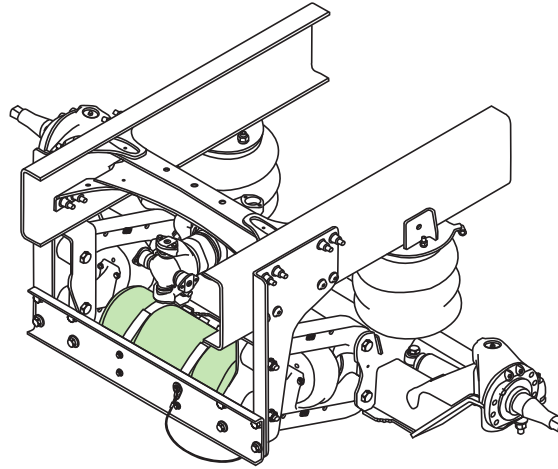
Note: Dimensions in parentheses are millimeters

Freightliner Business Class M2

Cab and Chassis Vocational Reference Guide

Air System

Air Tank, Aft of Bracket Lower HLUC2



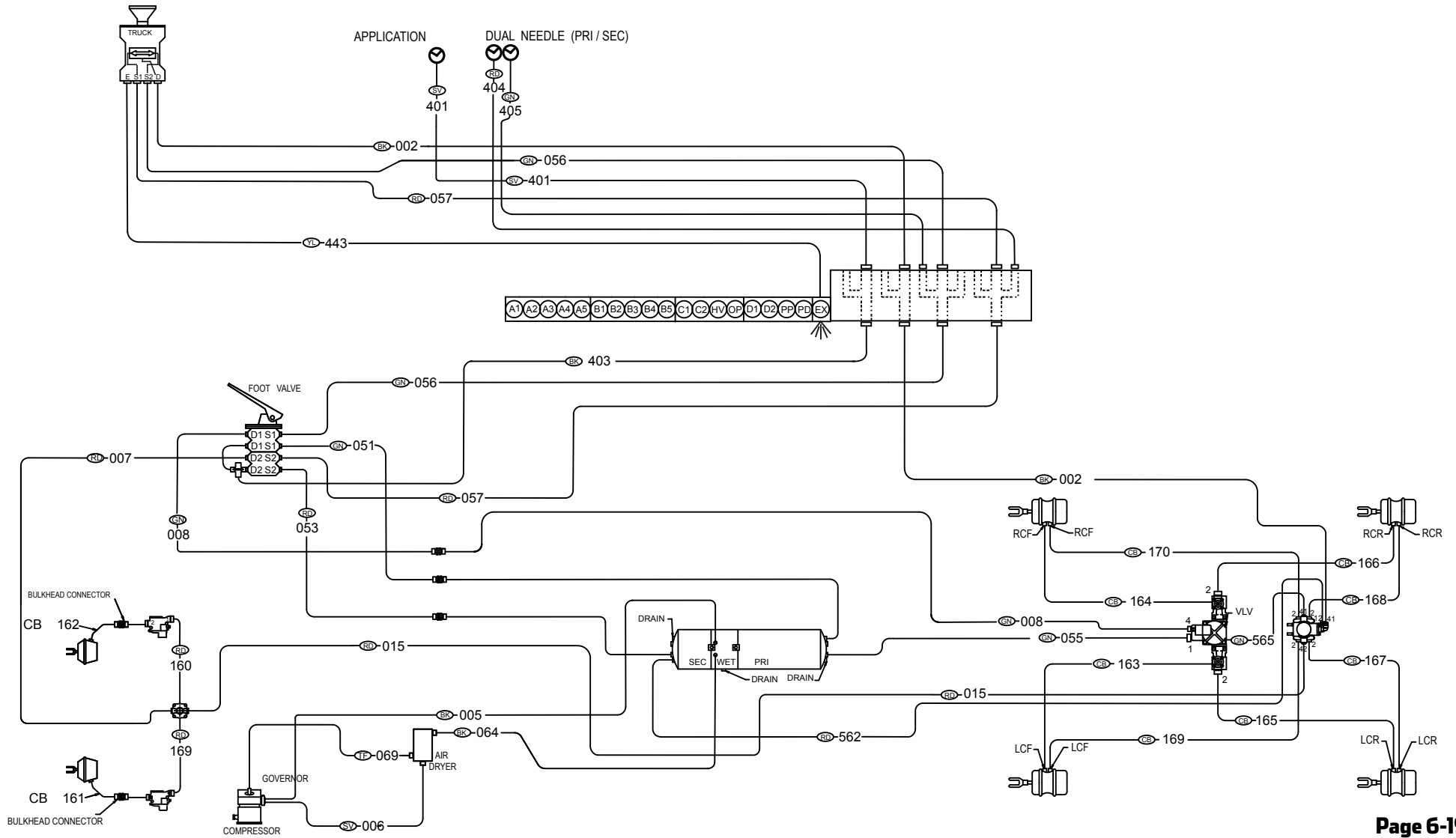
Note: Dimensions in parentheses are millimeters

Freightliner Business Class M2

Cab and Chassis Vocational Reference Guide

Air System

Tandem Axle Truck



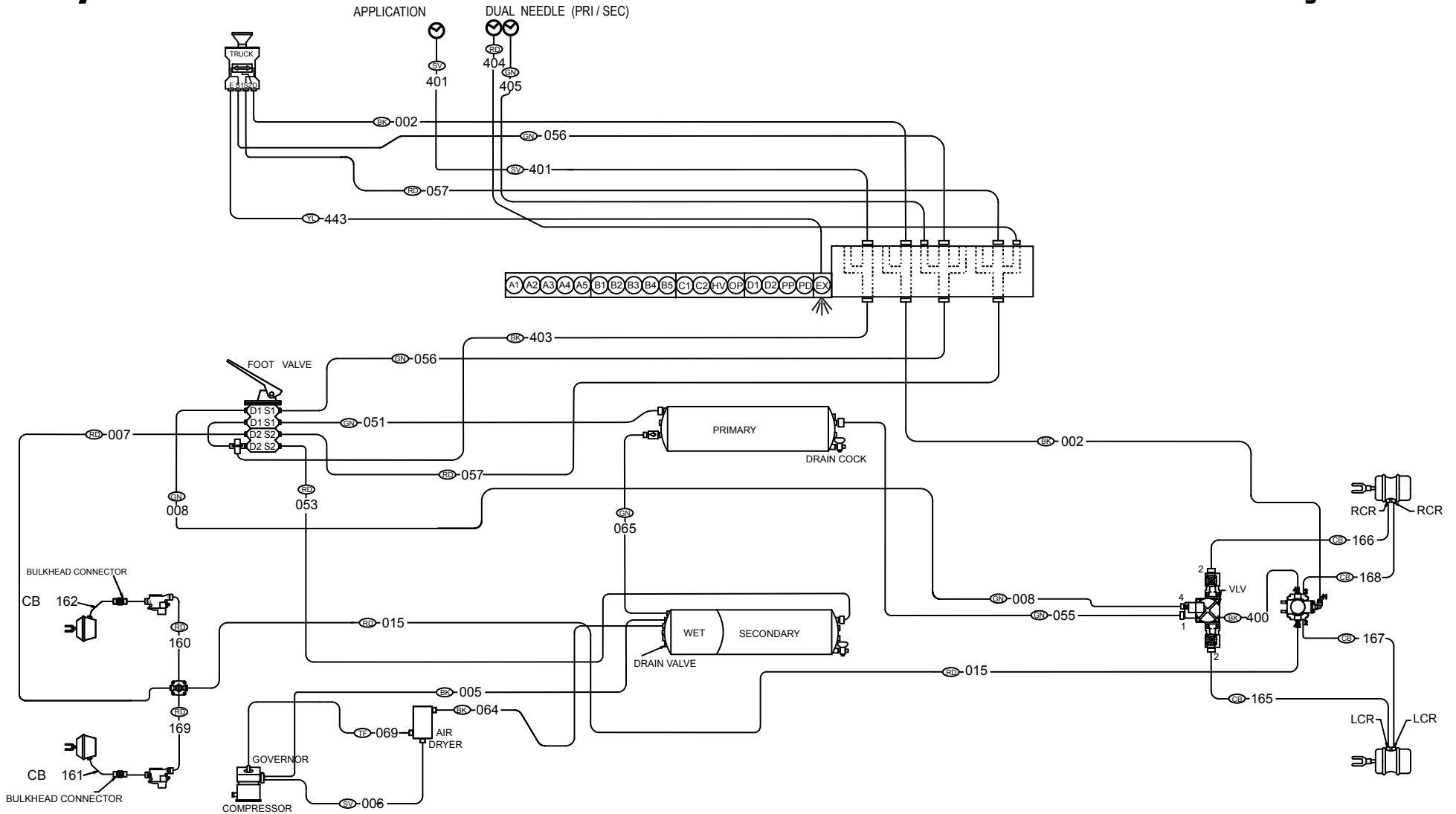
Note: Dimensions in parentheses are millimeters

Freightliner Business Class M2

Cab and Chassis Vocational Reference Guide

Air System

Single Axle Truck



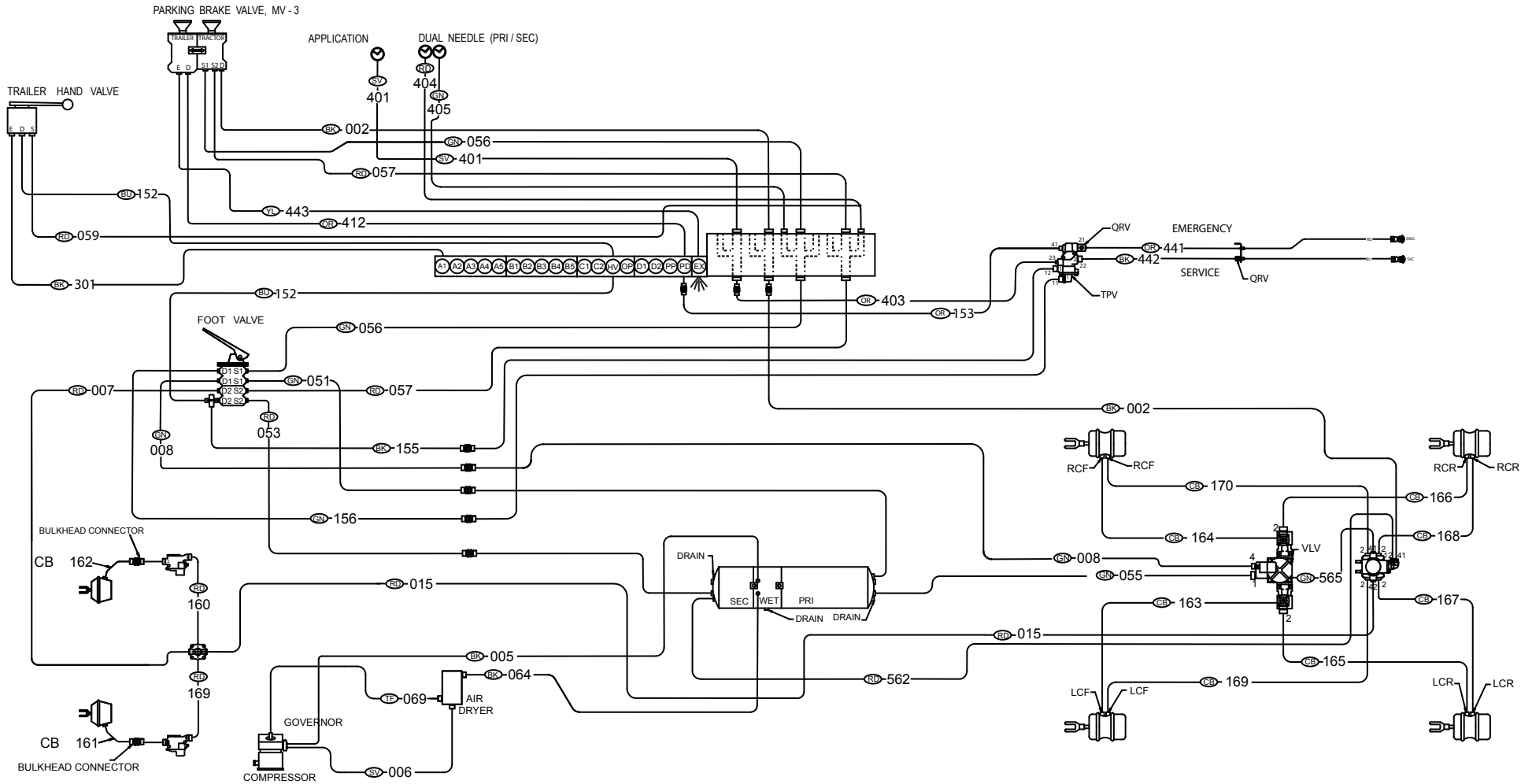
Note: Dimensions in parentheses are millimeters

Freightliner Business Class M2

Cab and Chassis Vocational Reference Guide

Air System

Tandem Axle Truck with Trailer Tow



Note: Dimensions in parentheses are millimeters